



# The City of Sparks, Nevada

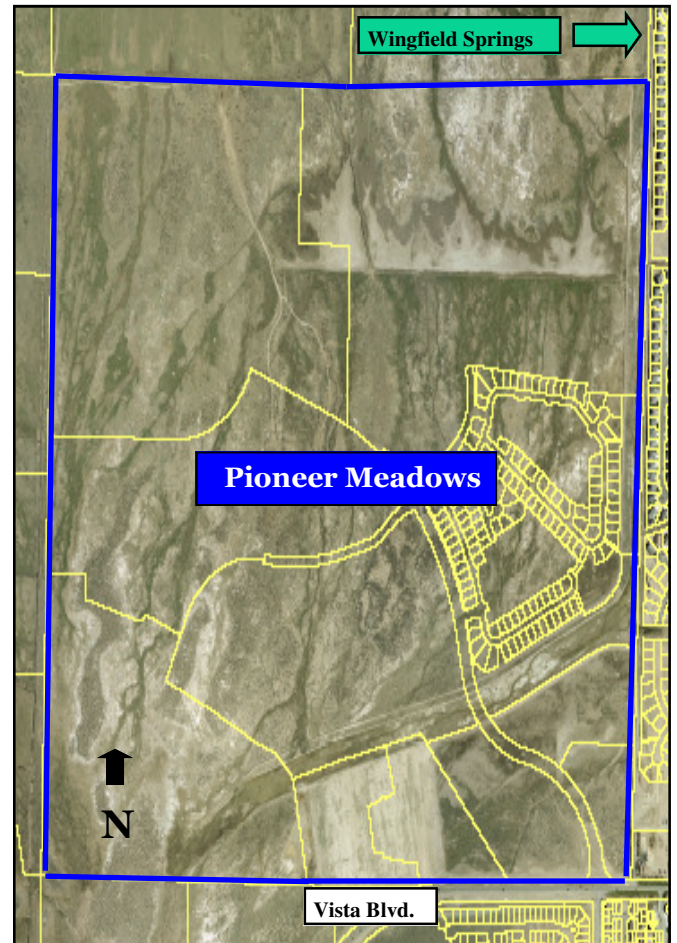
## Pioneer Meadows

### Project Size

- 640 Acres
- 109 Acres of Business Park
- 47 Acres of Commercial
- 1860 Multiple Family Units
- 728 Single Family Units

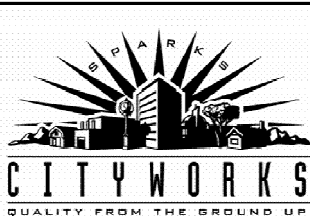
### Details

- Pioneer Meadows is located west of Wingfield Springs along Vista Blvd.
- It is a 640 Acre mixed use development including:
  - 182 acres of Single Family
  - 158 acres of Common Area
  - 109 acres of Business Park
  - 85 acres of Multi-Family
  - 47 acres of Commercial



### Status

- An amendment to the Pioneer Meadows Development Handbook was recorded on January 8, 2007 that consolidated the business park and add design standards for cluster home development.
- Residential Villages 1, 2, 3 and 9 are recorded and under construction.
- The project has approval for a commercial/retail development northeast and northwest of the intersection of Wingfield Hills and Vista Blvd. Anchor tenants include Raley's and Long's Drugs.
- There have been approvals related to a 300 unit apartment complex and two adult care facilities.



The City of Sparks, Nevada  
Community Development  
1675 E. Prater Way-Suite 107  
Sparks, NV 89434  
(775)-353-2340  
[www.cityofsparks.us](http://www.cityofsparks.us)



Celebrating 100 years 3/15/05